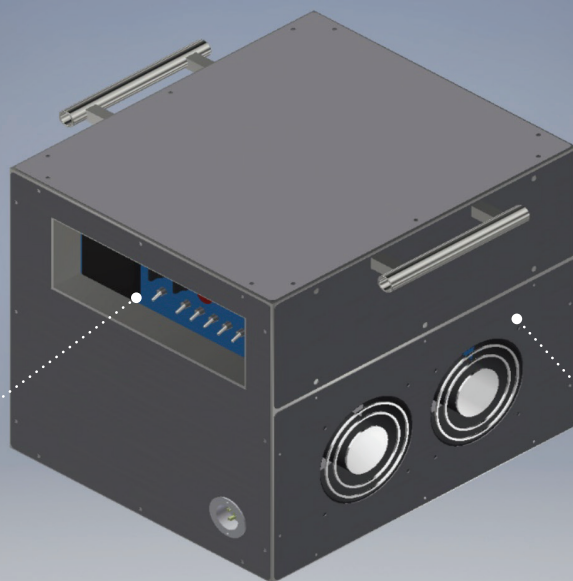


CLBZ37-1Ph

Quality Load Banks
at a Good Price

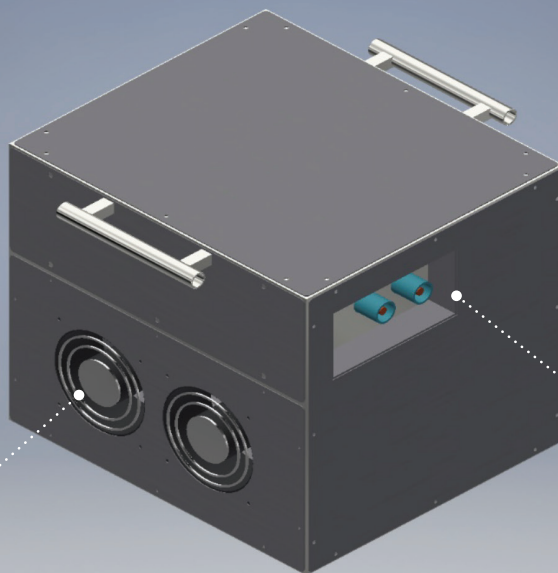


Recessed control panel with master and fan switches, step switches, digital meter and warning lamps.



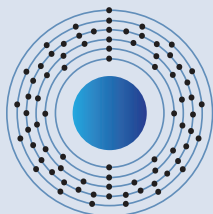
Rugged, lightweight aluminum construction to ensure no rusting. (optional casters not shown)

High-speed fans to ensure that resistors are adequately cooled for a long life.



Recessed power connection panel with 400 amp cam-lock connectors.

Option:
Anderson Connectors



**General
Platinum**
LOAD BANKS

Pittsburgh, PA • USA
generalplatinum.com
info@generalplatinum.com



CLBZ37-1Ph

Quality Load Banks
at a Good Price

CERTIFICATION

Product will have the CSA label "US Field Evaluation for Electrical Products".

CONSTRUCTION

The structure is all-aluminum to ensure no corrosion.
Heavy-duty skeleton frame holds panels and equipment in place.

RESISTORS

The resistors are a stainless steel alloy to ensure long-life and a minimum change in resistance from cold to hot.

SAFETY

Ground terminal is provided. Fan inlets are shielded. Thermal cutouts ensure that equipment does not exceed permissible temperatures.

CONNECTIONS

Customer connects the power to the load bank via heavy-duty 400 amp industry-standard connectors. Control power is connected through a flanged male receptacle. An optional connection is via a comms port to the digital meter to record the test session.

CONTROLS

The controls are in a recessed panel to prevent accidental damage. Master switch turns the unit and the meter display on. A fan switch turns the fans on and enables the load steps. Individual step switches allow power to be added in increments. A "load-enable" switch allows the load to be set first and then instantly loaded to the generator.

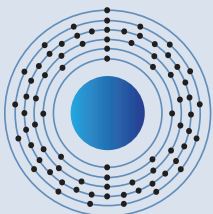
OPTIONS

Available options are: 3" casters, digital recording capability.

ACCESSORIES

Available accessories are: shipping crate with or without casters, vinyl cover.

PRODUCT	KW	VOLTAGE	STEPS	DIMENSIONS
CLBZ37-1Ph FC	37/28/37	240/208/120	1.2/0.9/1.2	23x19x19H
CLBZ37-1Ph PC	37/28/27	240/208/120	1.2/0.9/1.2	
CLBZ37-1Ph RC	37/28/9	240/208/120	1.2/0.9/1.2	
CLBZ35-SV	35	480 or 240	5/10/20	23x19x19H
CLBZ35-DV	35	480/240/208	5/10/20	
CLBZ35-MV	35	600/480/240/208	5/10/20	
CLBZ95-SV	95	480 or 240	5/10/20/20/40	23x19x35H
CLBZ95-DV	95	480/240/208	5/10/20/20/40	
CLBZ95-MV	95	600/480/240/208	5/10/20/20/40	
CLBX155-SV	155	480 or 240	5/10/20/40/80	50x28x32H
CLBX155-DV	155	480/240/208	5/10/20/40/80	
CLBX155-MV	155	600/480/240/208	5/10/20/40/80	



**General
Platinum**
LOAD BANKS

Pittsburgh, PA • USA
generalplatinum.com
info@generalplatinum.com



CLBZ37-1Ph • 04/21