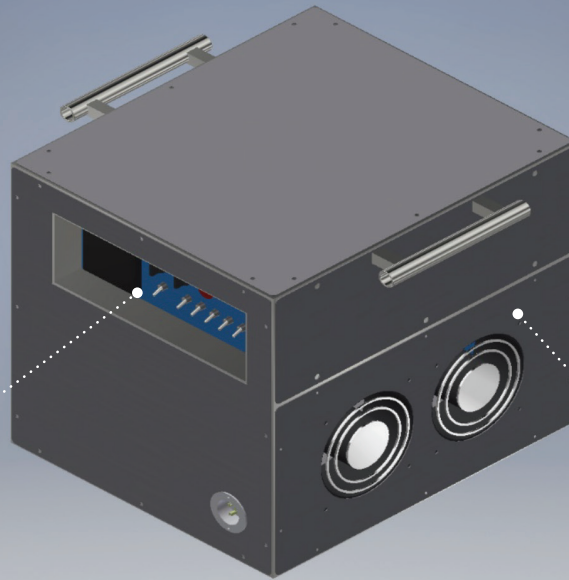


# LBZ37-1Ph

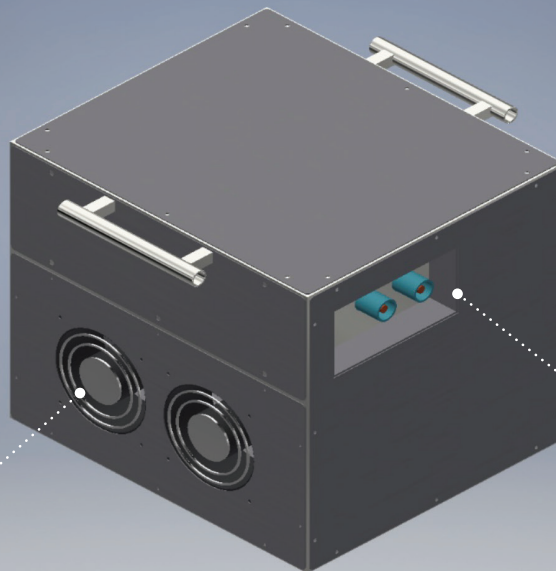
Quality Load Banks  
at a Good Price

Recessed control panel with master and fan switches, step switches, digital meter and warning lamps.



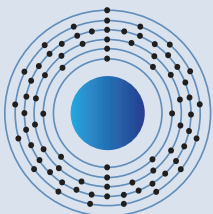
Rugged, lightweight aluminum construction to ensure no rusting. (optional casters not shown)

High-speed fans to ensure that resistors are adequately cooled for a long life.



Recessed power connection panel with 400 amp cam-lock connectors.

Option:  
Anderson Connectors



**General  
Platinum**  
LOAD BANKS

Pittsburgh, PA • USA  
[generalplatinum.com](http://generalplatinum.com)  
[info@generalplatinum.com](mailto:info@generalplatinum.com)



# LBZ37-1Ph

Quality Load Banks  
at a Good Price

## CONSTRUCTION

The structure is all-aluminum to ensure no corrosion. Heavy-duty skeleton frame holds panels and equipment in place.

## RESISTORS

The resistors are a stainless steel alloy to ensure long-life and a minimum change in resistance from cold to hot.

## SAFETY

Ground terminal is provided. Fan inlets are shielded. Thermal cutouts ensure that equipment does not exceed permissible temperatures.

## CONNECTIONS

Customer connects the power to the load bank via heavy-duty 400 amp industry-standard connectors. Control power is connected through a flanged male receptacle. An optional connection is via a comms port to the digital meter to record the test session.

## CONTROLS

The controls are in a recessed panel to prevent accidental damage. Master switch turns the unit and the meter display on. A fan switch turns the fans on and enables the load steps. Individual step switches allow power to be added in increments. A "load-enable" switch allows the load to be set first and then instantly loaded to the generator.

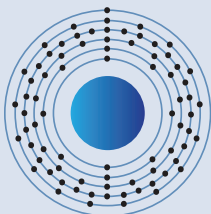
## OPTIONS

Available options are: 3" casters, digital recording capability.

## ACCESSORIES

Available accessories are: shipping crate with or without casters, vinyl cover.

PRODUCT	KW	VOLTAGE	STEPS	DIMENSIONS
LBZ37-1Ph FC	37/28/37	240/208/120	1.2/0.9/1.2	23x19x19H
LBZ37-1Ph PC	37/28/27	240/208/120	1.2/0.9/1.2	
LBZ37-1Ph RC	37/28/9	240/208/120	1.2/0.9/1.2	
LBZ35-SV	35	480 or 240	5/10/20	23x19x19H
LBZ35-DV	35	480/240/208	5/10/20	
LBZ35-MV	35	600/480/240/208	5/10/20	
LBZ95-SV	95	480 or 240	5/10/20/20/40	23x19x35H
LBZ95-DV	95	480/240/208	5/10/20/20/40	
LBZ95-MV	95	600/480/240/208	5/10/20/20/40	
LBX155-SV	155	480 or 240	5/10/20/40/80	50x28x32H
LBX155-DV	155	480/240/208	5/10/20/40/80	
LBX155-MV	155	600/480/240/208	5/10/20/40/80	



**General  
Platinum**  
LOAD BANKS

Pittsburgh, PA • USA  
generalplatinum.com  
info@generalplatinum.com



LBZ37-1Ph • 04/21